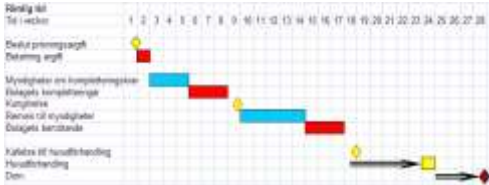


**European Minerals Forum 2010**  
**“The EU Raw Materials Initiative – What next?”**  
**Thursday 2 December 2010**  
Renaissance Hotel, Brussels

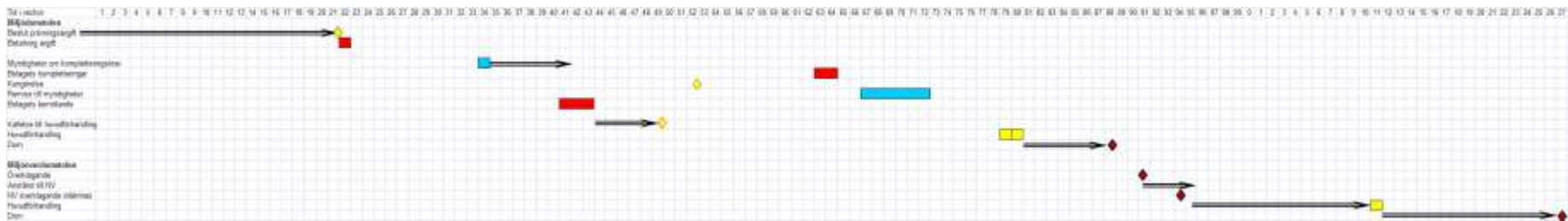
## **Bringing down Permitting times in Sweden**

Tomas From

# Time to get permission; a real mine case



Anticipated active process time



Actual process time incl. passive time

# Proposals

- Environmental Ambition Maintained
- Permitting and monitoring should focus on activities with significant impacts on the environment

# Proposals cont.

- **Regulatory measures**

- Harmonise with IPPC /IED

*In Sweden 5.000 facilities are obliged to seek permits  
According to IPPC it should be 1.100.*

- Harmonise with Environmental Impact Assessment Directive

*In Sweden 3 – 4.000 assessments / year.  
In Finland 25.*

- Reconsider and reduce to activities with significant impacts on the environment

- Expansions should be possible for the new parts only, and without a new full permit procedure for the whole already existing facility

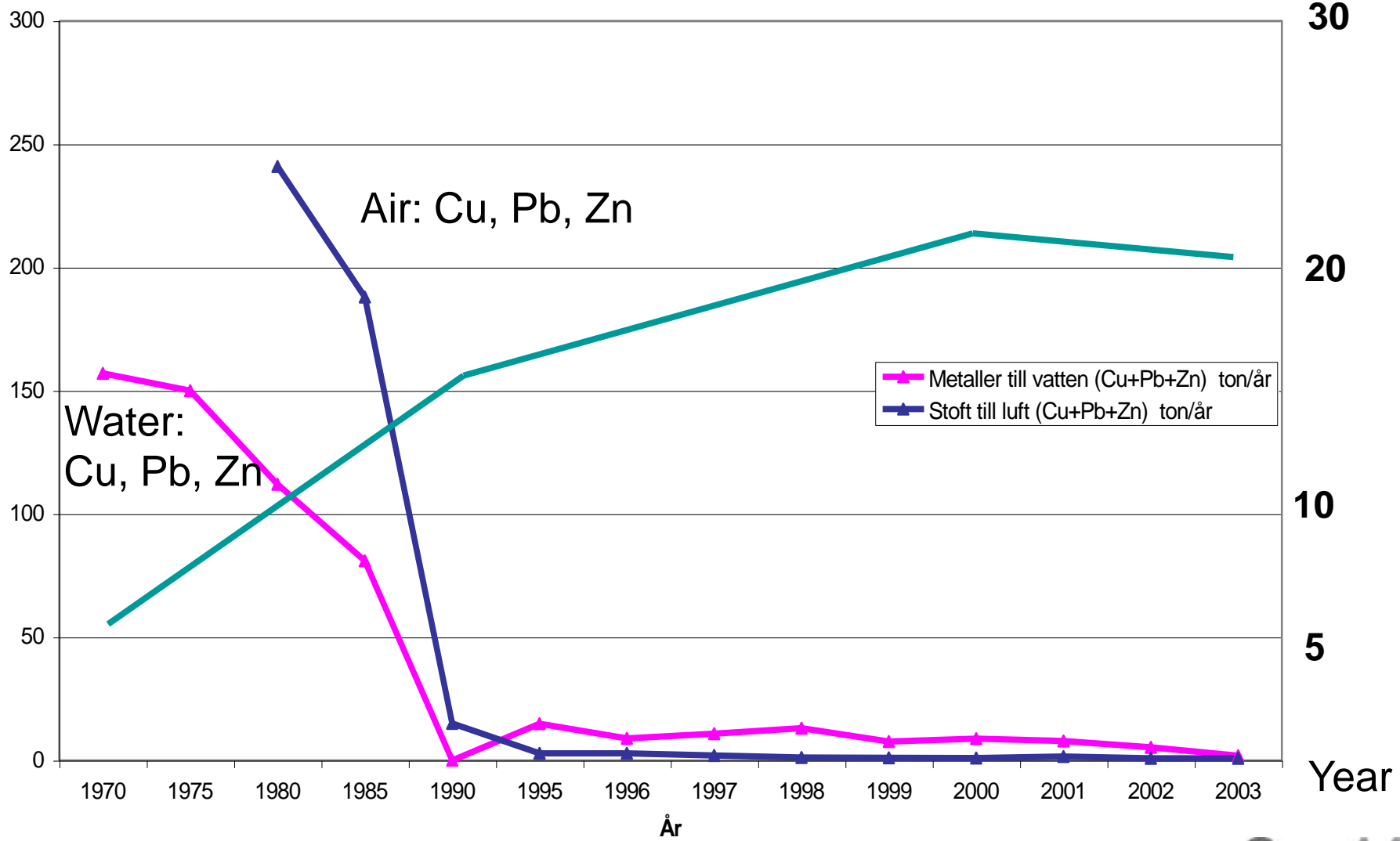
# Proposals cont.

- The permitting process is very time consuming and can be much improved and the time significantly reduced
- A positive and informing attitude of authorities with adequate resources and competence
- Clarify the expectations of authorities on applications.
- Limit the possibility of the authorities to request new information at later stages of the process.

# Total emissions from Boliden Swedish Mines

Production  
Mton/Year

Ton/Year



# Stekenjokk in production



# Stekenjokk – closed and remediated mine site

